

MiM 120 ELECTRONIC PIPE & CABLE MARKER

Passive electronic pipe & cable markers for permanent marking and tracing of your underground facilities.

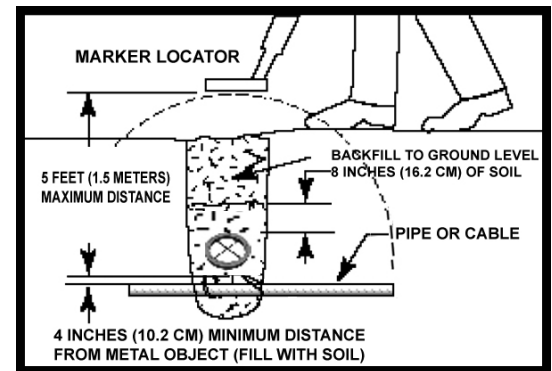
Features:

- Compact Size
- Use In Any Orientation: Horizontal, Vertical or at an angle
- Economical








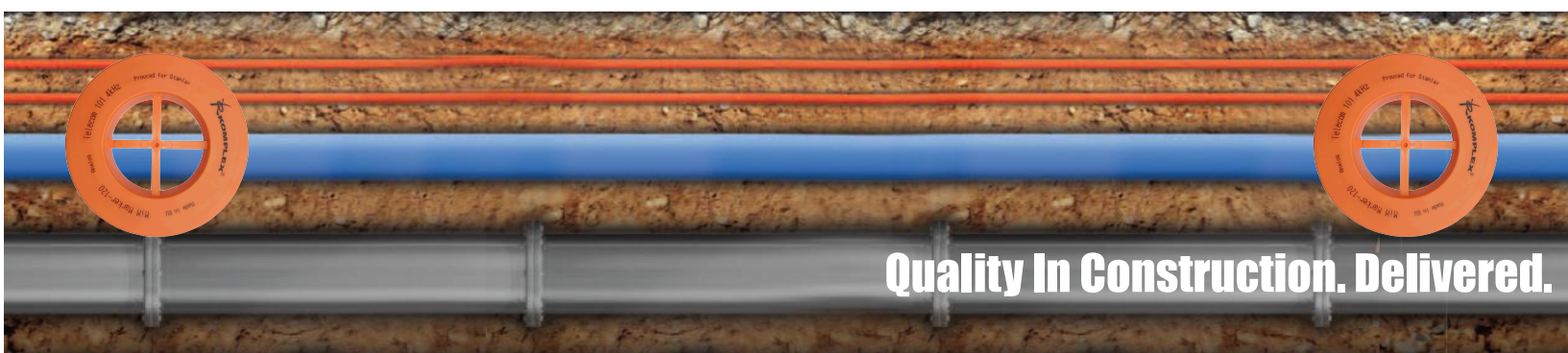
Technical Specification Of MiM Marker 120

| | |
|---------------------------|---|
| Operating frequency (kHz) | 101.4, 145.7, 121.6, 83.0, 169.8, 134.0 |
| Material of cover | High Density PS |
| Dimensions | Dia: 120mm, Thickness: 34mm |
| Marker read range | 1.4 m (Ideal); 1.5m (Max) |
| Life | ≥ 50 years |



TYPES OF OPERATING FREQUENCY

| Operating frequency | Type of device | Color of marker | Type of Marker Locator |
|----------------------|------------------|--|---|
| 101.4 kHz | Telephone Cables | Orange  | EML, Marker Mate or 8890/8891 Electronic Marker Locator |
| 145.7 kHz | Water Pipelines | Blue  | |
| 121.6 kHz | Sewer Pipelines | Green  | |
| 83.0 kHz | Gas Pipelines | Yellow  | |
| 134.0 kHz, 169.8 kHz | Power Cables | Red  | |



Marker 2500. Long Marker. Mar 100-3D Electronic Pipe & Cable Marker

Passive electronic marker for permanent marking of buried cable & pipe utility services.
It provides an economical & reliable method for permanent marking of utilities during installation.

Three types of Analog marker available provide following depth options:

- Marker 2500: upto 1.8 meter
- Long Marker High Depth: upto 2.5 meter
- Mar 100-3D Ball Marker: upto 1.2 meter

MARKER 2500: Flat Disc Marker

Marker 2500 is designed for permanent marking of buried utility services with depth detection range of 1.8 m. The marker 2500 is one of the most widely used marker for marking of all types of underground devices & is available in 6 industry frequency options based on type of utility being permanently marked. Can be used in any orientation.

Long Marker is a High Depth flat disc analog marker option with an increased reading range of up to 2.5 m.



| Marker 2500 (Analog) Disc Markers | |
|-----------------------------------|---|
| Operating frequency (kHz) | 83.0, 101.4, 121.6, 134.0, 145.7, 169.8 |
| Material of cover | High Density PS |
| Dimensions | Diameter x height 225 x 28 mm |
| Weight | max. 300g |
| Marker read range | 1.8 m (5.9 ft); Long marker model 2.5 m (8.2ft) |
| Operating temperature | -20 to +60 °C |
| Lifetime | 50 years |

| MAR 100-3D (Analog) Ball Markers | |
|----------------------------------|---|
| Operating frequency (kHz) | 83.0, 101.4, 121.6, 134.0, 145.7, 169.8 |
| Material of cover | PE |
| Dimensions | Diameter 130 mm |
| Weight | Max. 210 g |
| Marker read range | 1.2 m (3.9 ft) |
| Operating temperature | -20 to +60 °C |
| Lifetime | 50 years |

MAR 100-3D: Electronic Ball Marker

MAR 100-3D is passive electronic (analog) Ball Marker. It is an ideal solution for narrow excavations.

The biggest advantage of MAR 100-3D is the spherical characteristic of the electromagnetic field of this marker. Strong PE cover of the MAR 100-3D provides protection of the marker even in the extreme conditions. Two holders on the PE cover enable to fix MAR 100-3D to your underground device by tape.

Electronic Marker Locator

Specifications

Operating Frequency: 169.8 kHz (power), 145.7 kHz (water), 121.6 kHz (sewer), 101.4 kHz (telephone), 83.0 kHz (gas), 77.0 kHz (CATV)

Display Indicators: Backlit LCD bar graph, low battery, signal strength, mode indicators

Audio Indication: Variable pitch response

Power Source: Disposable alkaline batteries

Battery Life: Continuous 18 to 20 hours auto shut-off

Signal Strength: LCD bar graph, absolute signal strength readout

Gain Control: Gain Adjust to Pinpoint Markers

Operating Temperature: -20° C to +50° C

Weight: ≤ 2.2 kgs

Features

- **6 frequency** locate standard utility markers for Power, Telco, CATV, Water, Sewer, and Gas
- **Scan feature** provides simultaneous detection of various markers
- Backlit digital display for low-light reading
- Weather proof membrane buttons



Asian Contec Ltd.
Asian Center, B-28, Okhla Industrial Area, Phase-1, New Delhi -110020, India.
Contact Nos. : Tel : +91-11-41860000 (100 Lines), Direct Sales Helpline : +91-11-41406926, Fax : +91-11-41860066
Web : www.stanlay.in www.stanlay.com email: sales@stanlay.com
Regional Offices : • Mumbai • Ahmadabad • Bengaluru • Hyderabad

Master distributor for Indian sub continent and Middle East.



Ref: ST/UG/M/AM/17